

# 670-705W

TOPCON

**Bifacial**

Half-Cut 18BB Module



**SMBB Technology**

Better light trapping and current collection to improve module power output and reliability.



**Higher Power Output**

Module power increases 5-25% generally, bringing significantly lower LCOE and higher IRR.



**PID Resistance**

Excellent Anti- PID performance guarantee via optimized mass-production process and materials control.



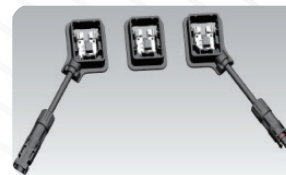
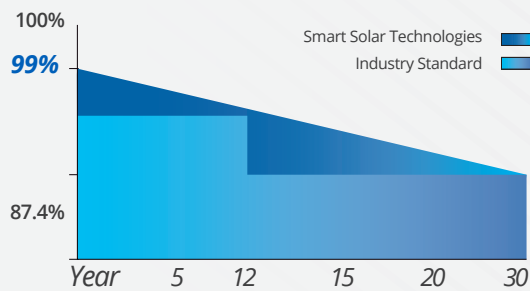
**Enhanced Mechanical Load**

**Certified to withstand:**  
wind load (2400 Pascal)  
and snow load (5400 Pascal).

**12**  
Year  
Product  
Warranty

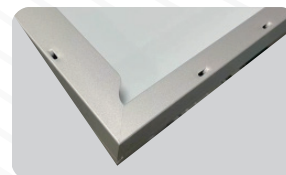
**30**  
Year  
Linear  
Performance  
Warranty

Guaranteed Power



**JUNCTION BOX**

Waterproof protection grade:IP68  
Safety Level Class II  
Maximum System Voltage: 1500 V  
outstanding waterproof level  
Effectively resist harsh environments



**FRAME**

Strong machanical load  
resistance up to 5400Pa  
Anodic oxidation layer resistant to  
chemical corrosion available  
in silver and black



ELECTRICAL TYPICAL VALUES

Model	SS670M12GH-22/WH	SS675M12GH-22/WH	SS680M12GH-22/WH	SS685M12GH-22/WH	SS690M12GH-22/WH	SS695M12GH-22/WH	SS700M12GH-22/WH	SS705M12GH-22/WH
Testing Condition	STC	STC	STC	STC	STC	STC	STC	STC
Rated Power (Pmpp)	670	675	680	685	690	695	700	705
Rated Current (Impp)	16.96	17.00	17.04	17.08	17.12	17.16	17.20	17.23
Rated Voltage (Vmpp)	39.52	39.72	39.92	40.12	40.32	40.52	40.72	40.92
Short Circuit Current (Isc)	17.72±3%	17.76±3%	17.80±3%	17.84±3%	17.88±3%	17.93±3%	17.97±3%	18.00±3%
Open Circuit Voltage (Voc)	47.42±3%	47.66±3%	47.90±3%	48.14±3%	48.38±3%	48.62±3%	48.86±3%	49.10±3%
Module Efficiency (%)	21.57	21.73	21.90	22.06	22.22	22.38	22.54	22.70

STC: irradiance 1000W/m<sup>2</sup>, AM 1.5, and cell temperature of 25°C

BNPI: back irradiance 135W/m<sup>2</sup>, AM 1.5, and cell temperature of 25°C

BIFACIALITY

Rated Power (Pmax)	742	748	753	759	765	770	776	781
Rated Current (Impp)	18.79	18.84	18.88	18.92	18.97	19.01	19.06	19.09
Rated Voltage (Vmpp)	39.52	39.72	39.92	40.12	40.32	40.52	40.72	40.92
Short Circuit Current (Isc)	19.63±3%	19.68±3%	19.72±3%	19.77±3%	19.81±3%	19.87±3%	19.91±3%	19.94±3%
Open Circuit Voltage (Voc)	47.42±3%	47.66±3%	47.90±3%	48.14±3%	48.38±3%	48.62±3%	48.86±3%	49.10±3%

TEMPERATURE RATINGS

Tolerance	0~+3w
NOCT	45±2°C
Voltage Temperature Coefficient	-0.220%/°C
Current Temperature Coefficient	+0.047%/°C
Power Temperature Coefficient	-0.240%/°C

PACKAGING CONFIGURATION

Container	40' HQ
Pieces/Container	666
Pallet/Container	18

ABSOLUTE MAX RATING

Operating Temperature	From -40 to +85°C
Front Side Maximum Static Loading	5400Pa
Rear Side Maximum Static Loading	2400Pa
Maksimum Series Fuse Rating	30A
Maksimum System Voltage	DC 1500V

MECHANICAL CHARACTERISTICS

Dimension (L x W x H)	Length: 2384mm Width: 1303mm Height: 30mm
Weight	39.20kg
Cell Type	210x105mm N Type Bifacial Mono
No. of Cells	132(12x11)
Front Glass	2.0mm AR coating tempered glass
Back Glass	2.0mm glazed glass
Frame	Anodized aluminium alloy
Cable	4mm <sup>2</sup> , cable 35cm (Including MC4 connector) *The requested cable length must be specified before the offer.
Junction Box	IP 68 Rated

ELECTRICAL CHARACTERISTIC

