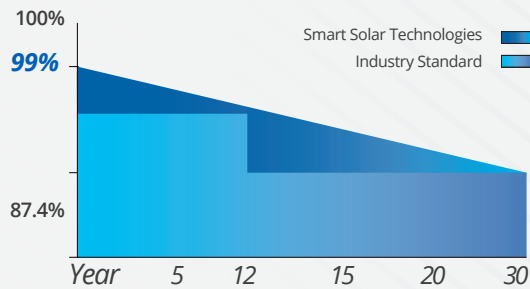


132 CELL

12
Year
Product
Warranty

30
Year
Linear
Performance
Warranty

Guaranteed Power



670-700W

TOPCON

Monofacial Half-Cut 18BB Module



SMBB Technology

Better light trapping and current collection to improve module power output and reliability.



Durability Against Extreme Environmental Conditions

High salt mist and ammonia resistance.



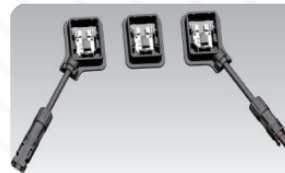
PID Resistance

Excellent Anti- PID performance guarantee via optimized mass-production process and materials control.



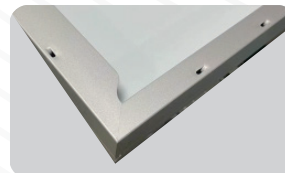
Enhanced Mechanical Load

Certified to withstand:
wind load (2400 Pascal) and snow load (5400 Pascal).



JUNCTION BOX

Waterproof protection grade:IP68
Safety Level Class II
Maximum System Voltage: 1500 V
outstanding waterproof level
Effectively resist harsh environments



FRAME

Strong machanical load resistance up to 5400Pa
Anodic oxidation layer resistant to chemical corrosion available in silver and black

ELECTRICAL TYPICAL VALUES

Model	SS670M12H-22/WH	SS675M12H-22/WH	SS680M12H-22/WH	SS685M12H-22/WH	SS690M12H-22/WH	SS695M12H-22/WH	SS700M12H-22/WH
Testing Condition	STC	STC	STC	STC	STC	STC	STC
Rated Power (Pmpp)	670	675	680	685	690	695	700
Rated Current (Imp)	16.96	17.00	17.04	17.08	17.12	17.16	17.20
Rated Voltage (Vmpp)	39.52	39.72	39.92	40.12	40.32	40.52	40.72
Short Circuit Current (Isc)	17.72±3%	17.76±3%	17.80±3%	17.84±3%	17.88±3%	17.93±3%	17.97±3%
Open Circuit Voltage (Voc)	47.42±3%	47.66±3%	47.90±3%	48.14±3%	48.38±3%	48.62±3%	48.86±3%
Module Efficiency (%)	21.57	21.73	21.90	22.06	22.22	22.38	22.54

STC: irradiance 1000W/m², AM 1.5, and cell temperature of 25°C

TEMPERATURE RATINGS

Tolerance	0~+3w
NOCT	45±2°C
Voltage Temperature Coefficient	-0.220%/°C
Current Temperature Coefficient	+0.047%/°C
Power Temperature Coefficient	-0.240%/°C

PACKAGING CONFIGURATION

Container	40' HQ
Pieces/Container	666
Pallet/Container	18

ABSOLUTE MAX RATING

Operating Temperature	From -40 to +85°C
Front Side Maximum Static Loading	5400Pa
Rear Side Maximum Static Loading	2400Pa
Maksimum Series Fuse Rating	30A
Maksimum System Voltage	DC 1500V

MECHANICAL CHARACTERISTICS

Dimension (L × W × H)	Length: 2384mm Width: 1303mm Height: 30mm
Weight	33.90kg
Cell Type	210x105mm N Type Mono
No. of Cells	132(12x11)
Front Glass	3.2mm high transmission, low iron, tempered glass
Frame	Anodized aluminium alloy
Cable	4mm ² (IEC), cable 35cm (Including MC4 connector) <small>*The requested cable length must be specified before the offer.</small>
Junction Box	IP 68 Rated

ELECTRICAL CHARACTERISTIC

