

460-480W

TOPCON

Full Black Bifacial

Half-Cut 16BB Module



SMBB Technology

Better light trapping and current collection to improve module power output and reliability.



Higher Power Output

Module power increases 5-25% generally, bringing significantly lower LCOE and higher IRR.



PID Resistance

Excellent Anti-PID performance guarantee via optimized mass-production process and materials control.



Enhanced Mechanical Load

Certified to withstand:
wind load (2400 Pascal)
and snow load (5400 Pascal).



12
Year

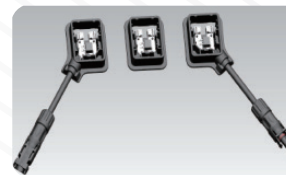
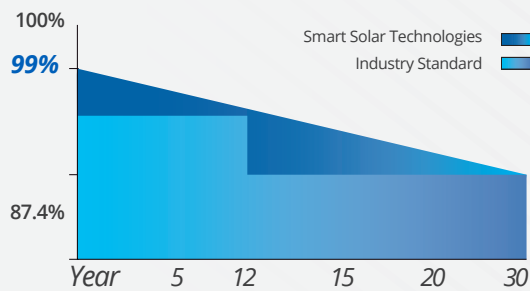
Product
Warranty



30
Year

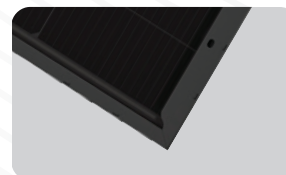
Linear
Performance
Warranty

Guaranteed Power



JUNCTION BOX

Waterproof protection grade: IP68
Safety Level Class II
Maximum System Voltage: 1500 V
outstanding waterproof level
Effectively resist harsh environments



FRAME

Strong mechanical load
resistance up to 5400Pa
Anodic oxidation layer resistant to
chemical corrosion available



ELECTRICAL TYPICAL VALUES

Model	SS460M10GH-20/UH		SS465M10GH-20/UH		SS470M10GH-20/UH		SS475M10GH-20/UH		SS480M10GH-20/UH	
	STC	NMOT	STC	NMOT	STC	NMOT	STC	NMOT	STC	NMOT
Testing Condition										
Rated Power (Pmpp)	460	346	465	350	470	353	475	357	480	361
Rated Current (Imp)	13.17	10.56	13.25	10.63	13.33	10.69	13.41	10.75	13.49	10.81
Rated Voltage (Vmpp)	34.92	32.74	35.09	32.90	35.25	33.05	35.41	33.20	35.58	33.35
Short Circuit Current (Isc)	13.91±3%	11.23±3%	13.99±3%	11.29±3%	14.07±3%	11.36±3%	14.15±3%	11.42±3%	14.23±3%	11.48±3%
Open Circuit Voltage (Voc)	42.25±3%	40.13±3%	42.42±3%	40.29±3%	42.58±3%	40.45±3%	42.74±3%	40.60±3%	42.91±3%	40.75±3%
Module Efficiency (%)	21.32		21.55		21.78		22.01		22.24	

STC: irradiance 1000W/m², AM 1.5, and cell temperature of 25°C

NMOT: irradiance 800W/m², AM 1.5, ambient temperature 20°C, wind speed 1m/s

BIFACIALITY

Rated Power (Pmax)	510	515	521	526	532
Rated Current (Imp)	14.60	14.68	14.78	14.85	14.95
Rated Voltage (Vmpp)	34.92	35.09	35.25	35.41	35.58
Short Circuit Current (Isc)	15.42±3%	15.50±3%	15.60±3%	15.66±3%	15.77±3%
Open Circuit Voltage (Voc)	42.25±3%	42.42±3%	42.58±3%	42.74±3%	42.91±3%

BNPI: back irradiance 135W/m², AM 1.5, and cell temperature of 25°C

TEMPERATURE RATINGS

Tolerance	0~+3w
NOCT	45±2°C
Voltage Temperature Coefficient	-0.250%/°C
Current Temperature Coefficient	+0.046%/°C
Power Temperature Coefficient	-0.300%/°C

PACKAGING CONFIGURATION

Container	20' GP	40' HQ
Pieces/Container	222	888
Pallet/Container	6	24

ABSOLUTE MAX RATING

Operating Temperature	From -40 to +85°C
Front Side Maximum Static Loading	5400Pa
Rear Side Maximum Static Loading	2400Pa
Maksimum Series Fuse Rating	30A
Maksimum System Voltage	DC 1500V

MECHANICAL CHARACTERISTICS

Dimension (L x W x H)	Length: 1903mm Width: 1134mm Height: 30mm
Weight	27.20kg
Cell Type	182x91mm N Type Bifacial Mono
No. of Cells	120(12x10)
Front Glass	2.0mm AR coating tempered glass
Back Glass	2.0mm glazed glass
Frame	Anodized aluminium alloy
Cable	4mm ² , cable 35cm (Including MC4 connector) <small>*The requested cable length must be specified before the offer.</small>
Junction Box	IP 68 Rated

ELECTRICAL CHARACTERISTIC

