

460-475W

TOPCON

Monofacial

Half-Cut 16BB Module



**SMBB Technology**

Better light trapping and current collection to improve module power output and reliability.



**Durability Against Extreme Environmental Conditions**

High salt mist and ammonia resistance.



**PID Resistance**

Excellent Anti- PID performance guarantee via optimized mass-production process and materials control.



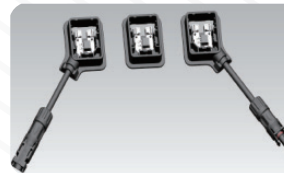
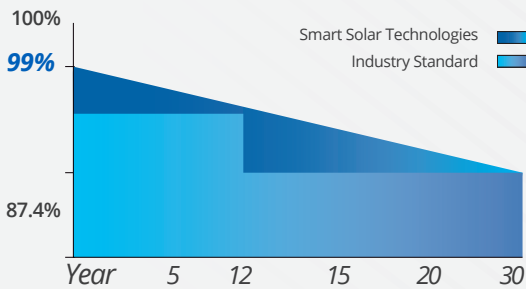
**Enhanced Mechanical Load**

**Certified to withstand:**  
wind load (2400 Pascal)  
and snow load (5400 Pascal).

12  
Year  
Product  
Warranty

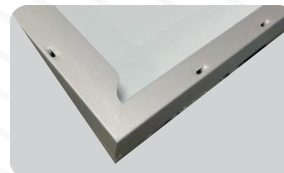
30  
Year  
Linear  
Performance  
Warranty

Guaranteed Power



**JUNCTION BOX**

Waterproof protection grade:IP68  
Safety Level Class II  
Maximum System Voltage: 1500 V  
outstanding waterproof level  
Effectively resist harsh environments



**FRAME**

Strong machinical load  
resistance up to 5400Pa  
Anodic oxidation layer resistant to  
chemical corrosion available  
in silver and black



ELECTRICAL TYPICAL VALUES

Model	SS460M10H-20/UH	SS465M10H-20/UH	SS470M10H-20/UH	SS475M10H-20/UH
Testing Condition	STC	STC	STC	STC
Rated Power (Pmpp)	460	465	470	475
Rated Current (Imp)	13.25	13.33	13.41	13.49
Rated Voltage (Vmpp)	34.72	34.89	35.05	35.21
Short Circuit Current (Isc)	13.99±3%	14.07±3%	14.15±3%	14.23±3%
Open Circuit Voltage (Voc)	42.05±3%	42.22±3%	42.38±3%	42.54±3%
Module Efficiency (%)	21.32	21.55	21.78	22.01

STC: irradiance 1000W/m<sup>2</sup>, AM 1.5, and cell temperature of 25°C

TEMPERATURE RATINGS

Tolerance	0~+3w
NOCT	45±2°C
Voltage Temperature Coefficient	-0.250%/°C
Current Temperature Coefficient	+0.046%/°C
Power Temperature Coefficient	-0.300%/°C

PACKAGING CONFIGURATION

Container	20' GP	40' HQ
Pieces/Container	222	888
Pallet/Container	6	24

ABSOLUTE MAX RATING

Operating Temperature	From -40 to +85°C
Front Side Maximum Static Loading	5400Pa
Rear Side Maximum Static Loading	2400Pa
Maksimum Series Fuse Rating	25A
Maksimum System Voltage	DC 1500V

MECHANICAL CHARACTERISTICS

Dimension (L × W × H)	Length: 1903mm Width: 1134mm Height: 30mm
Weight	23.80kg
Cell Type	182x91mm N Type Mono
No. of Cells	120(12x10)
Front Glass	3.2mm high transmission, low iron, tempered glass
Frame	Anodized aluminium alloy
Cable	4mm <sup>2</sup> (IEC), cable 35cm (Including MC4 connector) *The requested cable length must be specified before the offer.
Junction Box	IP 68 Rated

ELECTRICAL CHARACTERISTIC

